



MULTI-LANGUAGE  
MANUAL

Quick Guide



SALUS Controls plc,  
Units 8-10,  
Northfield Business Park,  
Forge Way, Parkgate  
Rotherham, S60 1SD

SALUS Controls GmbH,  
Dieselstrasse 34,  
63165 Mühlheim am Main,  
Germany

UK: tech@salus-tech.com  
DE / NL: info@salus-controls.de  
PL: poland@saluscontrols.com  
FR: technicalsupport@saluscontrols.fr  
RO: tehnic@saluscontrols.ro  
DK: Support@salus-controls.dk



www.saluscontrols.com

SALUS Controls is a member of the Computime Group  
Maintaining a policy of continuous product development SALUS  
Controls plc reserves the right to change specifications, design and  
materials of products listed in this brochure without prior notice.



V02  
03/2025

## Introduction

The **091PRO-RF** is a programmable weekly controller designed to regulate the temperature of heating or cooling systems. It operates on AA, 1.5V alkaline batteries, which must be inserted into the compartment under the flap. Rechargeable batteries are not supported. Additionally, the device features a **Boost Mode** that can be activated based on **motion detection**, ensuring optimal comfort and efficiency. Full manual available on our website.

## Product Compliance

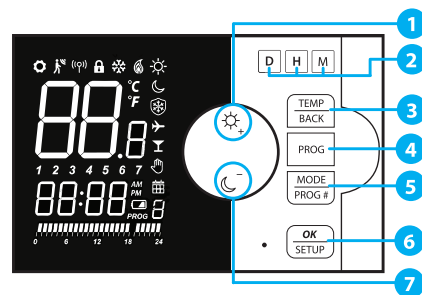
This product complies with the essential requirements and other relevant provisions of Directives: 2015/863/EU, 2014/53/EU (P) 868.0 MHz <13dBm  
The full text of the EU Declaration of Conformity is available at the following internet address: [www.saluslegal.com](http://www.saluslegal.com)

## Safety Information

Use in accordance to national and EU regulations. Use the device as intended, keeping it in dry condition. Product for indoor use only. Installation must be carried out by a qualified person in accordance to national and EU regulations.

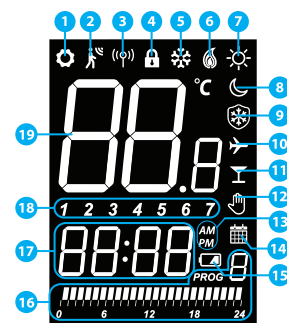


## Buttons & description



1. Setting **Comfort** or Temperature **UP**
2. Set the day (D), hour (H) and minute (M)
3. Set **Comfort** or **Economy** temperature
4. Weekly Program setting
5. **New Program Mode** or **Program Selection**
6. **Confirm function** or **Service Menu**
7. Setting Economic Mode or Temperature **DOWN**

## Icons and Display

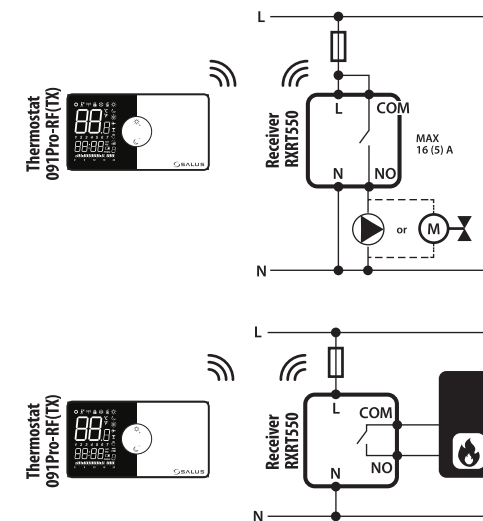


1. Settings
2. Motion detection
3. RF Status
4. Child protection
5. Cooling mode
6. Heating mode
7. Comfort mode
8. Economic mode
9. Frost protection mode
10. Holiday mode
11. Party mode
12. Manual mode or Temporary override
13. AM / PM

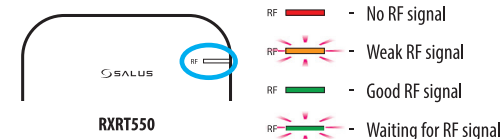
14. Personalised time indicator
15. Low battery indicator
16. Hourly program indicator
17. Clock
18. Day of the week
19. Room or Setpoint temperature

## Wiring Diagram

Refer to the wiring diagrams for proper receiver installation.



When powering on the receiver, check the RF LED color and blinking pattern to determine the RF signal quality. Refer below for explanation of each LED color and pattern.

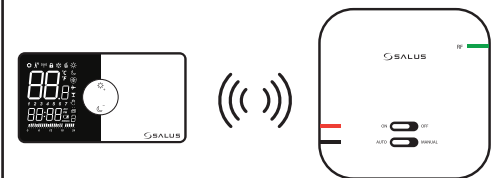


Position the thermostat and receiver within reliable RF range (RF LED color **green**) to ensure correct operation.

## First Power Up

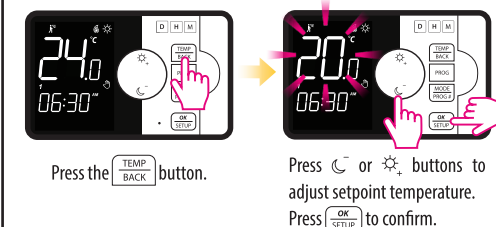
The thermostat and receiver come pre-paired from the factory, so no setup is needed.

Once you turn on the thermostat and receiver, they will pair automatically.



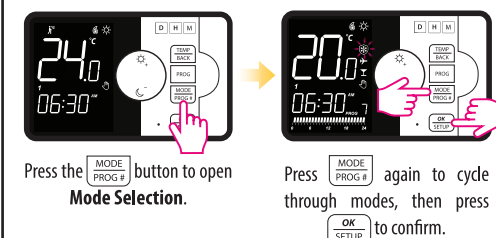
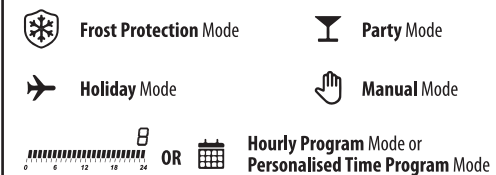
Follow the steps on page 2 to re-pair your thermostat and receiver in case of need.

## Change Setpoint Temperature



## Mode Selection

Mode selection allows users to cycle through different operating modes of the 091Pro-RF(TX), each tailored for specific situations.

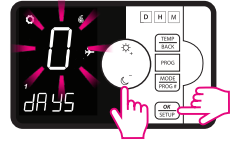


## Frost Protection Mode

Frost protection prevents the temperature from dropping below a safe level, helping to avoid freezing temperatures and maintain minimal heating when the system is off.

## Holiday Mode

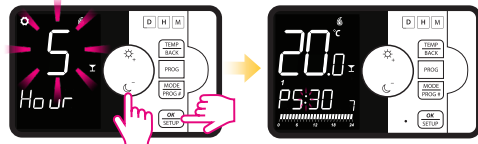
Holiday mode keeps the thermostat at a set temperature for an extended period while you're away, helping to save energy while preventing the home from getting too cold or too hot.



Press **+** or **-** buttons to adjust the number of days active. Confirm by selecting **OK SETUP**.

## Party Mode

Party mode temporarily overrides the scheduled temperature for a set number of hours, ensuring comfort during gatherings without changing the regular schedule.



Press **+** or **-** buttons to adjust the number of active hours. Confirm by selecting **OK SETUP**.

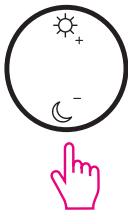
Thermostat will start the Party Mode countdown.

## Manual Mode

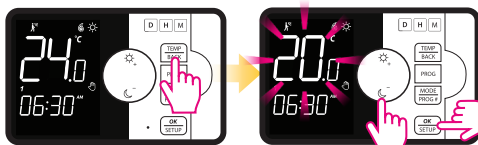
Manual mode allows users to set and maintain a desired temperature without following a schedule. The setpoint can be adjusted anytime.

From main screen it can be selected one of the two settings by pressing button with the representing icon:

- Comfort mode** ☀️ - maintains a higher set temperature for a warm and cozy environment, ideal for times when you are at home and active.
- Economic mode** 🌙 - maintains a lower set temperature to save energy while still keeping the space comfortable, ideal for times when less heating or cooling is needed.



The user can set custom temperatures for both **Comfort** and **Economic** modes to match their personal preferences.



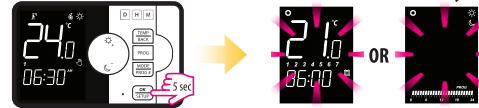
Press the **TEMP BACK** button.

Press **+** or **-** buttons to adjust setpoint temperature. Confirm by selecting **OK SETUP**.

## Program Mode

Create a personalised or preset heating schedule to match your routine. Set different temperatures for specific times, ensuring comfort and efficiency. The thermostat then adjusts automatically to your settings. Follow below steps to select one of the two programming modes that can be used.

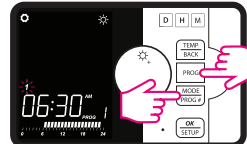
### Choose the program mode



Hold **OK SETUP** for 5 seconds to enter **SETUP** then cycle through settings by pressing the same button until reaching Program Mode selection.

Press **+** or **-** buttons to choose. Confirm selection **OK SETUP**. Hold **OK SETUP** 5 seconds again to exit **SETUP** mode.

### Hourly Program - 📅

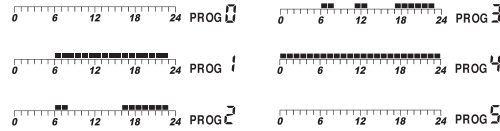


Press **PROG** multiple times to select the day of the week you want to change.

1 2 3 4 5 6 7

Then press the **MODE PROG** button to circle through programs.

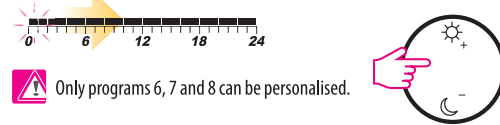
The thermostat offers 9 programs in total. PROG 0-5 are factory preset and cannot be edited, but you can select and use them. PROG 6-8 are customizable, allowing you to create your own heating schedule.



**PROG 0** is a special type of program that allows the user to set the whole day to frost protection temperature.

How to personalize a hourly program:

When reaching a program that can be personalised (PROG 6 to 8), use the **+** and **-** buttons to select if you want to use the **Economic** or **Comfort** Mode. Selection should be done by circling through all hours.



Only programs 6, 7 and 8 can be personalised.

Confirm by pressing **OK SETUP** button.

### Personalised Time Program - 📅

Press **PROG** to select the days of the week you want to change and circle through options by **+** and **-** buttons.

- Full week: 1 2 3 4 5 6 7
- Weekend: 6 7
- Working days: 1 2 3 4 5
- Individual days

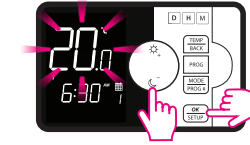
Continue by pressing **OK SETUP** button.



Set the hour by using **+** and **-**. Then confirm by pressing **OK SETUP**.



Set the minute by using **+** and **-**. Then confirm by pressing **OK SETUP**.



Set the temperature by pressing **+** and **-**. Then confirm by pressing **OK SETUP**.

Each day includes 6 programs. After setting one, the next automatically appears for adjustment.

**Please note:** Each period's start and end time must be strictly between the previous period's end and the next period's start to ensure a logical, conflict-free schedule.

### Example:

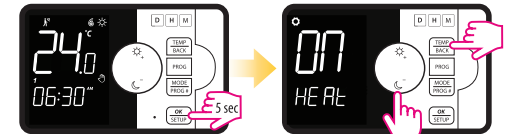
- 1st Period:** 6:30, 20° C (1st period is active until 2nd period starts)
- 2nd Period:** 8:00, 24.5° C (2nd period is active until 3rd period starts)

**6th Period:** 22:00, 20° C (6th period is active until 1st period of the next day starts).

To confirm your changes, hold **OK SETUP** for 5 seconds. The screen will then return to the home display.

## Motion detection (Boost mode)

Boost Mode functions only in Program Mode and applies only for heating. How to turn on the motion detection (Boost mode):



### For Hourly Program

In an hourly program, Boost Mode overrides Economy mode based on motion detection. When motion is detected, the system automatically switches to Comfort mode in a 1h time frame.



### For Personalised Time Program

In a personalised time program, Boost Mode overrides the current set temperature with the highest setpoint scheduled for that day when motion is detected.

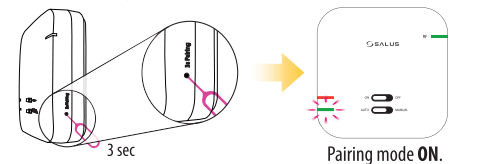


## Other Settings

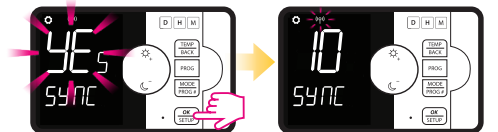
The thermostat also includes additional settings to customize your experience, allowing you to adjust preferences to suit your needs.

Display	Description
HEAT	Enable the <b>Auto Boost Mode</b> based on motion detection.
DISP	Allows the display to turn on automatically when motion is detected. <b>Disclaimer:</b> Enabling the motion-activated display will significantly reduce battery life.
SENS	Adjust the motion detection sensitivity 1-3 levels
🔥/❄️	Heating or cooling mode selection.
📅	Program mode selection.
24h or 12h	24 or 12 hours format.
0.1 or 0.5	LCD displayed resolution of temperature.
OFFS	Temperature offset adjustment: Range from -3.5°C to +3.5°C in 0.1°C steps, default set to 0.0°C.
TEST	Activates RF test mode for the receiver to check signal quality.
SYNC	Activates thermostat-receiver pairing. If select YES it will be open for 10 minutes
PIN	Allows the user to set a PIN for security.
SPAN/TPI	Select the control algorithm - SPAN 0.25C/0.5C/1.0C or TPI 3/6/9 CPH
dLY	Enables a 5-minute heating switch delay (heat mode only).
out	NC or NO output control setup
Lo	The lowest temperature that can be set.
HI	The highest temperature that can be set.
rEC	Receiver manual controls - for admin user to disable the manual controls on the receiver (set to NO).

## Re-Pairing of Thermostat and Receiver



Pairing mode ON.



Enter settings and turn on synchronization mode on thermostat.

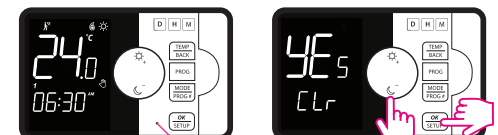
Confirm by selecting **OK SETUP**.



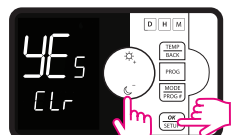
Synchronization will stay on for 10 minutes.



## Factory reset



Press and hold for 5 seconds the **Factory Setup** button.



Select YES by pressing **+** or **-**. Then confirm by pressing **OK SETUP**.